



Republic of the Philippines
Department of Education
Region VI-Western Visayas
SCHOOLS DIVISION OF KABANKALAN CITY

Office of the Schools Division
Superintendent

DIVISION MEMORANDUM

NO. 123, s. 2023

MAR 21 2023

**PARTICIPATION TO THE DEPARTMENT OF HEALTH'S ONLINE SURVEY ON THE
"ACCESS TO PRIMARY CARE FACILITIES AND SERVICES OF GOVERNMENT
EMPLOYEES AND THEIR IMMEDIATE FAMILY"**

To: OIC-Asst. Schools Division Superintendent
CID & SGOD Chiefs
Public Schools District Supervisors
Public Elementary & Secondary School Heads
All Others Concerned

1. Attached are Regional Memorandum No. 199 s. 2023 and DepEd Memorandum OUHROD-2023-0361 regarding the **Participation to the Department of Health's Online Survey on the "Access to Primary Care Facilities and Services of Government Employees and their Immediate Family"**.
2. Anent this, all teaching and non-teaching personnel are requested to participate in this exercise by accomplishing the survey form through this link <https://tinyurl.com/DOHNRCPRResearch2022> on or before March 24, 2023.
3. Immediate dissemination of and compliance with this Memorandum are desired.

MICHELL L. ACOYONG, CESO VI
Assistant Schools Division Superintendent
Officer-in-Charge
Office of the Schools Division Superintendent





Republic of the Philippines
Department of Education
REGION VI – WESTERN VISAYAS

MAR 17 2023

REGIONAL MEMORANDUM

No. 199, s. 2023

**PARTICIPATION TO THE DEPARTMENT OF HEALTH'S ONLINE SURVEY ON
THE "ACCESS TO PRIMARY CARE FACILITIES AND SERVICES OF
GOVERNMENT EMPLOYEES AND THEIR IMMEDIATE FAMILY"**

To: Schools Division Superintendents
All Others Concerned

1. Attached is a Memorandum from the Office of *Undersecretary for Human Resource and Organizational Development (OUHROD)*, **Gloria Jumamil-Mercado**, dated March 08, 2023, regarding the **Participation to the Department of Health's online Survey on the "Access to Primary Care Facilities and Services of Government Employees and their Immediate Family."**
2. Immediate dissemination of and compliance with this Memorandum are desired.


RAMIR B. UYTICO EdD, CESO III
Regional Director

Reference: MEMORANDUM DM-OUHROD-2023-0361
dated March 08, 2023

To be indicated in the Perpetual Index
under the following subjects:

SCHOOL
HEALTH
SURVEY
EMPLOYEES



DepEdRO6-ESSD-RM-2023-043

Address: Duran Street, Iloilo City, 5000
Telephone Nos: (033)509-7653; (033)336-2816
Email Address: region6@deped.gov.ph
Website: region6.deped.gov.ph



Republika ng Pilipinas

Department of Education

OFFICE OF THE UNDERSECRETARY

HUMAN RESOURCE AND ORGANIZATIONAL DEVELOPMENT

1482672

MEMORANDUM
DM-OUHROD-2023-0361

FOR : **Undersecretaries**
Assistant Secretaries
Bureau/Service Directors
Regional Directors
Schools Division Superintendents
Division Chiefs
Heads of Schools
All Others Concerned

MAR 13 2023

470

4

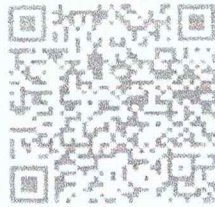
FROM : 
GLORIA JUMAMIL-MERCADO
Undersecretary

SUBJECT : **Participation to the Department of Health's Online Survey on the "Access to Primary Care Facilities and Services of Government Employees and their Immediate Family"**

DATE : 08 March 2023

The Department of Health (DOH) is conducting a research project entitled "Access to Primary Care Facilities and Services of Government Employees and their Immediate Family" which aims to determine evidence-based policy recommendations to aid policy makers and legislators to strengthen and improve access to quality primary healthcare facilities and services of government employees and their family members. One of the research methodologies is a cross-sectional study wherein the research proponents will conduct surveys using a stratified random sampling. The survey intends to generate feedback from government employees on their access to health services and to identify factors that inhibit or contribute to health service utilization.

In connection thereto, the DOH through the Bureau of Human Resource and Organizational Development - Employee Welfare Division would like to invite DepEd employees in all governance levels, both teaching and non-teaching, regardless of employment status, rank, gender, age, ethnicity, including PWDs, to participate in this endeavor by accomplishing the survey form through this link <https://tinurl.com/DOHNRCPresearch2022> or through the QR code below on or before March 24, 2023.



Rest assured that all information in the survey form shall only be used for the said purpose and shall adhere to the provisions of the data privacy act.

For questions and concerns, please contact Ms. Marge Latosa of the Employee Welfare Division through office number (02) 86337229/8635-3760 or email bhrod.ewd@deped.gov.ph.

Thank you.



Bureau of Human Resources and Organizational Development Office of the Director
<bhrod.od@deped.gov.ph>

Fwd: DOH-NRCP Health Research

1 message

Jennifer Lopez <jennifer.lopez006@deped.gov.ph>

Tue, Mar 7, 2023 at 10:36 PM

To: Earl Ryan Losito <earl.losito@deped.gov.ph>, FRANCIS ALLEN DELA CRUZ <Francis.delacruz003@deped.gov.ph>, mario bermudez <mario.bermudez101@deped.gov.ph>, "cc: Resty Osias" <resty.osias@deped.gov.ph>, BHROD - Office of the Director <Bhrod.od@deped.gov.ph>

Dear Dirs Resty and Ram:

Attn: Francis and Earl

Endorsing herewith this request of DOH research study team that is of interest to VPSPD's concern about teacher welfare.

Thanks

----- Forwarded message -----

From: **NRCP Research Project Access to Health** <nrcphealthresearch@doh.gov.ph>

Date: Tue, Mar 7, 2023 at 8:55 AM

Subject: DOH-NRCP Health Research

To: <mitchparas_nta@yahoo.com.ph>, Roderick Napulan <rmnapulan@doh.gov.ph>, Veronica Macabate <vbmabate@yahoo.com>, <kmmano@nlp.gov.ph>, Carla Del Prado <ccsdelprado@pmo.gov.ph>, Myrell Angela Manzano <myrell_angela@yahoo.com>, <masong_delim@yahoo.com>, CHARMAINE LOVE B. BARAOED <cbaraoed@dbm.gov.ph>, <paradojun623@gmail.com>, Ricky M. Abundo <rmabundo@sec.gov.ph>, <sedimaano@gmail.com>, <gonzales.rowena@dpwh.gov.ph>, Maria Carmela P. Romerosa <mromerosa@dof.gov.ph>, <pandajen.88@gmail.com>, Alea Portia Gomez <aleaportia@alea.gov.ph>, Edna Sarita <hr.oshc@gmail.com>, <agnesdoj22@gmail.com>, noel villar <noelbvillar@yahoo.com>, <dpdonoso@gppb.gov.ph>, Jennifer Lopez <jennifer.lopez006@deped.gov.ph>, <rosaly.santos@privacy.gov.ph>, <ppaco.cao@gmail.com>, Lani P. Ulep <LPUlep@ppp.gov.ph>, <dtichoso@philfida.da.gov.ph>, Carmelo Rei C. Santos <crc.santos@insurance.gov.ph>, <mapptiblani@gcg.gov.ph>, <amcidro@gcg.gov.ph>, Richel B De Mesa <richel.demesa@phivolcs.dost.gov.ph>, <villafranca.michael@dpwh.gov.ph>, <apquezada@ddb.gov.ph>, <fgsih@sec.gov.ph>, <javaldez@sec.gov.ph>, <ggpuaso@tesda.gov.ph>, Consuelo B. Eusebio <cbeusebio@gpp.gov.ph>, <atesperat@tesda.gov.ph>, Michael Macapallag <mmmacapallag@doh.gov.ph>, <nogalizal@customs.gov.ph>, <manuel.safuito@privacy.gov.ph>, <nimfaunica@yahoo.com.ph>, <nina.sanglay@deped.gov.ph>, <jaguila@dmw.gov.ph>, <jarimado@dmw.gov.ph>, <adiaz@dof.gov.ph>, PDEA ahrs <ahrs@pdea.gov.ph>, <abbaculi@tourism.gov.ph>

Greetings from the Department of Health!

We are currently conducting a research study entitled, "Access to Primary Care Facilities and Services of Government Employees and their Immediate Family" which has been approved and granted funds by the National Research Council of the Philippines (NRCP). The research aims to determine policy recommendations on the access to primary care facilities and services of government employees and their family members.

We are writing to request your institution to send an employee to participate in an **online focus group discussion** (40 - 60 minutes) to listen to their perspective regarding the current health services accessible to them. To qualify, the participant would have to be employed outside of the human resources division and the medical services. The date for the focus group discussion is to be announced. **Please register here – <https://tinyurl.com/DOHNRCPFGD>**

If you have any questions, please contact **Ms. Joyce Ong**, research staff, Office of the Director, Administrative Service, through email at nrcphealthresearch@doh.gov.ph or at 09338609954.

Hoping for your positive response. Thank you for your time.

Respectfully yours,

Roderick M. Napulan, CESE
Director IV
Department of Health, Administrative Service




Jennifer E. Lopez, Ph.D., CESO IV
Director III
Bureau of Human Resource and Organizational Development

Department of Education
DepEd Complex, Meralco Avenue, Pasig City
www.deped.gov.ph

This communication may contain confidential or privileged information, and is intended solely for the individual or entity to whom it is originally addressed. Any disclosure, copying, dissemination, or any action taken in reliance to it by others, other than the intended recipient, is strictly prohibited. The opinions, conclusions, and statements expressed in this message are those of the sender and may not necessarily reflect the views of the Department of Education.

2 attachments

 **ConceptNote.docx.pdf**
126K

 **Infograph.pdf**
1881K



Republic of the Philippines
Department of Health
OFFICE OF THE SECRETARY

CONCEPT NOTE

Research Title:	Access to Primary Care Facilities and Services of Government Employees and their Immediate Family
Coordinating Investigator:	Mr. Roderick M. Napulan, CESE
Funding Agency:	National Research Council of the Philippines
Executive Summary:	
<p>This research paper aims to generate evidence-based policy recommendations to aid policy makers and legislators to strengthen and improve access to quality primary healthcare facilities and services of government employees and their immediate family members. Mixed study design will be implemented in this study that includes multi-stage design surveys among selected government employees and their family members, Focused-Group Discussions with key stakeholders, Key Informant Interviews, among others. Data management will be carried out using statistical software by trained research assistants. Quantitative data will be subject to statistical treatment and while thematic analysis will be done for qualitative data. Recommendations will be generated from the findings of the study and be presented to policy makers for considerations.</p>	
Rationale:	
<p>According to the World Health Organization (2018), primary health care offers a range of economic benefits particularly on its potential to improve health outcomes, health equity and the health system. A need to conduct research that was identified in order to determine the aspects of primary care and primary health care and their utmost potentials towards better outcomes in health status of the population, health system's efficiency and health equity; the optimal contributions to economic progress of these outcomes; and factors that facilitate or hinder the implementation of primary care and primary health care.</p> <p>The Philippines in 2019 enacted the Universal Health Care (UHC) Act, which is anchored on primary health care. In considering the baseline situation, according to the Department of Health:</p> <p>"At present, the Philippines' UHC index, which is a measure of access to health, ranks low with a score of 60 out of 100. We are behind our neighboring countries like Thailand, Vietnam, and Malaysia. The country, relative to its income range, has poor health outcomes due to low access to healthcare."* Visiting a health facility or seeking advice or treatment does not even reach 10 percent of Filipino households according to the National Demographic and Health Survey - only 6.9 percent of the uppermost quintile, 7.7 percent of the lowermost, 7.6 percent average across all).** Yet the Filipino people's long-term aspiration as articulated by AmBisyon Natin</p>	

2040 is “matatag, maginhawa at panatag na buhay”, strongly rooted, comfortable and secure, which health and well-being cut across.

**"Philippine Health Facility Development Plan 2020-2040: Investing in Resilient and Sustainable Health Facilities towards Universal Health Care" (Department of Health, 2021, MS Powerpoint presentation).*

***Table 13.3, Treatment Seeking Behavior, National Demographic and Health Survey (Philippine Statistics Authority, 2017), page 195.*

Objectives:

General Objective: Determine policy recommendations on the access to primary care facilities and services of government employees and their family members

Specific Objectives:

1. determine the level of access to health facilities and services of government employees and their immediate family members
2. identify the contributing and inhibiting factors on access to primary care facilities and services
3. estimate the cost of services and facilities in establishing clinics in regional and central government offices
4. examine the existing policies and standards for preventive, curative, and rehabilitative care extended to government employees
5. identify gaps and policy recommendations in improving access on health services

Study Design and Methodology:

This study will employ a mixed study design with the following to comprise the methodology:

1. Systematic and Desk Review - existing research studies and policies issued by Department of Health, Civil Service, Department of Labour and Employment and other government agencies shall be reviewed. This review will be used in the conduct of policy analysis.
2. Cross-Sectional / Survey - Using stratified random sampling, a survey in coordination with the Civil Service Commission will be conducted. The survey intends to generate feedback from government employees on their access to health services and to identify factors that inhibit or contribute to health service utilization.
3. Focus Group Discussions / Round Table Discussions - pre-selected groups of individuals representing various stakeholders with in-depth knowledge on the topic will be invited to participate in the discussion.
4. Key Informant Interviews - government officials and leaders of organizations will be requested to participate in an interview to acquire their insights, current policies and plans, and understanding on the topic.

Gender of research participants in the FGD and KII will be considered in the selection process to ensure inclusiveness. Likewise, study will not limit the participation of Persons with Disabilities, Senior Citizens, and rank-and-file employees of the government sector.

Visual platforms may be utilised in the interview and meetings.

Proper authorization and consent shall be acquired prior to engagement with subjects and participants. Clearance from the accredited Research Ethics Review Board will be secured before the start of the data collection process.

Research personnel will be hired and trained in the research processes before deployed to their respective job functions.

Inclusion Criteria:

All the government agencies including Local Government Units and Government-owned-and-Controlled Corporations

All permanent, casual, contractual and contract of service employees including their immediate families

Gender mainstreaming and harmonization will be done using the GAD checklists for project monitoring and evaluation/project management and implementation. Gender will be considered in the selection of the participants of the study. All the data collection tools will include the gender of the participants. No participants will be denied and excluded in the activities with gender as the reason.

Exclusion Criteria:

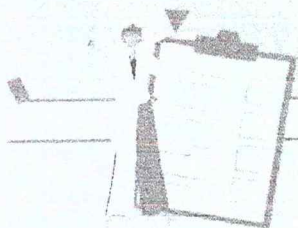
This study will exclude government employees stationed outside the country during the conduct of the study. The participants will only cover those part of the official roster of employees of the government which will be requested from CSC or will be provided by government agencies.

Data Analysis Plan:

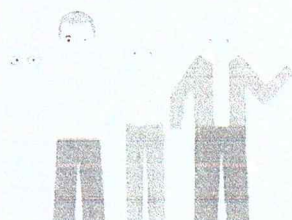
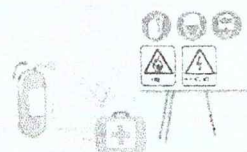
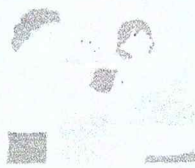
Integrated people-centered health services framework based on the DOH Administrative Order No. 2020-0003 will be used to guide the development of the survey tool. The demographic characteristics of patients such as name (optional), agency/office, age, gender, civil status, years of service in government, current position, educational attainment, and number of household members below 19, 19-65, and above 65. Health-seeking behavior questions will be asked which include visits to health facilities or medical professional services, mode of access to health services, cost of treatment, among others. Reasons for why or why not government employees and their immediate families access primary care facilities and services will be probed. Combination of open and closed ended questions will be employed depending on the interests. Pilot testing will be done prior to the implementation of the survey.

Analyses for the quantitative data will be carried out using statistical software. Qualitative data will be done using thematic analysis. All data will undergo data cleaning and validation prior to analyses. A database will be created and maintained using Microsoft excel.

Study Outcomes:



- 1 To determine the level of access to health facilities and services
- 2 To identify the contributing and inhibiting factors on access to primary care facilities and services
- 3 To estimate the cost of healthcare services and facilities
- 4 To examine the existing policies and standards for preventive, curative, and rehabilitative care
- 5 To identify gaps and policy recommendations in improving access to health services



Gender, as well as other aspects of diversity and social inclusion of research participants will be considered in the selection process to ensure inclusiveness, and the study will not limit participation of persons such as with disabilities, senior citizens, members of the LGBTQ+, and

**DEPARTMENT OF EDUCATION**

DepEd Complex, Meralco Avenue, Pasig City

DepEDOffice of the Undersecretary for Human Resource and
Organizational Development, National Educators' Academy of the Philippines, and
Teacher Education Council Secretariat

Secretary for HROD (OUHROD) <usec.hrod@deped.gov.ph>

1482652

REFERENCE SLIPDate : 09/13/2022
For : Birtanion
Attention :

sarch@doh.gov.ph>

Fri, Feb 10, 2023 at 10:09 AM

- | | |
|--|---|
| <input type="checkbox"/> Initial if Okay | <input type="checkbox"/> Comment/Recommendation |
| <input checked="" type="checkbox"/> Appropriate action | <input type="checkbox"/> Follow-up/Monitor |
| <input type="checkbox"/> Reference/Information | <input type="checkbox"/> Immediate Action |
| <input type="checkbox"/> Please see me | <input type="checkbox"/> Draft reply |

NOTE: EVERYTHING SHOULD BE TREATED AS URGENT

NELSON
02-13-23
132

29-00708


GLORIA JUMAMIL-MERCADO
 Undersecretary

Department of Education to take part in a online survey
 nary Care Facilities and Services of Government
 ented by the Department of Health and has been
 ch Council of the Philippines. The research aims to

determine evidence-based policy recommendations on the access to primary care facilities and services
 of government employees and their family members.

Relative to this, we would like to seek your assistance in the administration of an online survey to a
 minimum of 901 employees of your agency. We would also like to set up a meeting with you or your
 representative at a date and time that is convenient to you for collaborations between our agencies, as
 well as to formally introduce and give you a background of the research study.

If you have any questions, please contact **Ms. Joyce Ong**, research staff, Office of the Director,
 Administrative Service, through email at nrcphealthresearch@doh.gov.ph or at 09338609954.

Hoping for your positive response. Thank you for your time.
 Respectfully yours,

Roderick M. Napulan, CESE
 Director IV
 Department of Health, Administrative Service

Office of the Undersecretary for Human Resource and Organizational Development
 (OUHROD) <usec.hrod@deped.gov.ph>
 To: NRCP Research Project Access to Health <nrcphealthresearch@doh.gov.ph>

Fri, Feb 10, 2023 at
 1:25 PM

Confirming receipt.



Office of Undersecretary for HROD (OUHROD) <usec.hrod@deped.gov.ph>

+482652

DOH-NRCP Health Research

2 messages

NRCP Research Project Access to Health <nrcphealthresearch@doh.gov.ph>

Fri, Feb 10, 2023 at 10:09 AM

To: usec.hrod@deped.gov.ph

10 February 2023

Gloria Jumamil-Mercado
Undersecretary
Human Resource and Organizational Development
Department of Education
Meralco Avenue, Pasig

NELSON
02-13-23
132

28-00708

Dear Usec Jumamil-Mercado,

Greetings from the Department of Health!

We are writing to **request** the employees of the **Department of Education** to take part in a online survey about a research study entitled, "Access to Primary Care Facilities and Services of Government Employees and their Immediate Family" implemented by the Department of Health and has been approved and granted funds by the National Research Council of the Philippines. The research aims to determine evidence-based policy recommendations on the access to primary care facilities and services of government employees and their family members.

Relative to this, we would like to seek your assistance in the administration of an online survey to a minimum of 901 employees of your agency. We would also like to set up a meeting with you or your representative at a date and time that is convenient to you for collaborations between our agencies, as well as to formally introduce and give you a background of the research study.

If you have any questions, please contact **Ms. Joyce Ong**, research staff, Office of the Director, Administrative Service, through email at nrcphealthresearch@doh.gov.ph or at 09338609954.

Hoping for your positive response. Thank you for your time.

Respectfully yours,

Roderick M. Napulan, CESE
Director IV
Department of Health, Administrative Service

Office of the Undersecretary for Human Resource and Organizational Development
(OUHROD) <usec.hrod@deped.gov.ph>
To: NRCP Research Project Access to Health <nrcphealthresearch@doh.gov.ph>

Fri, Feb 10, 2023 at 1:25 PM

Confirming receipt.

MAW
2/10/23